

The top half of the image features a composite background. On the left, three sharks are swimming in clear blue water. On the right, a large, vertical stainless steel pump is shown, extending from the bottom towards the top. The pump has a blue-colored top section with several bolts. The text "[50 Hz]" is located in the top right corner.

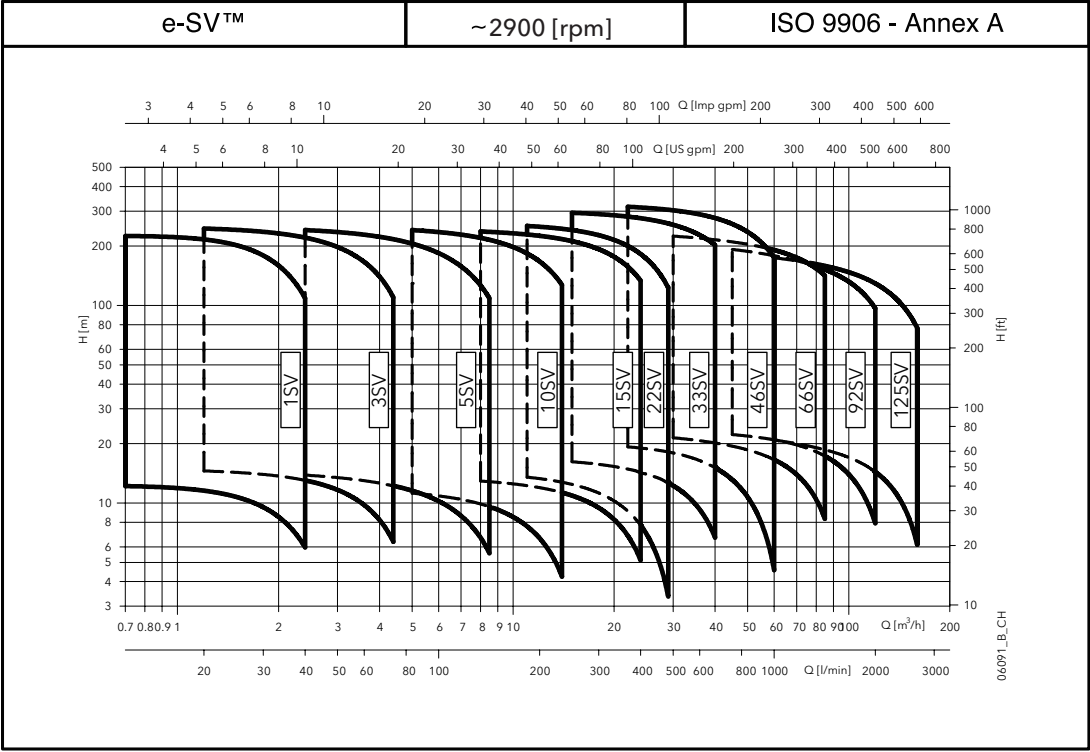
[50 Hz]

e-SV™ Series

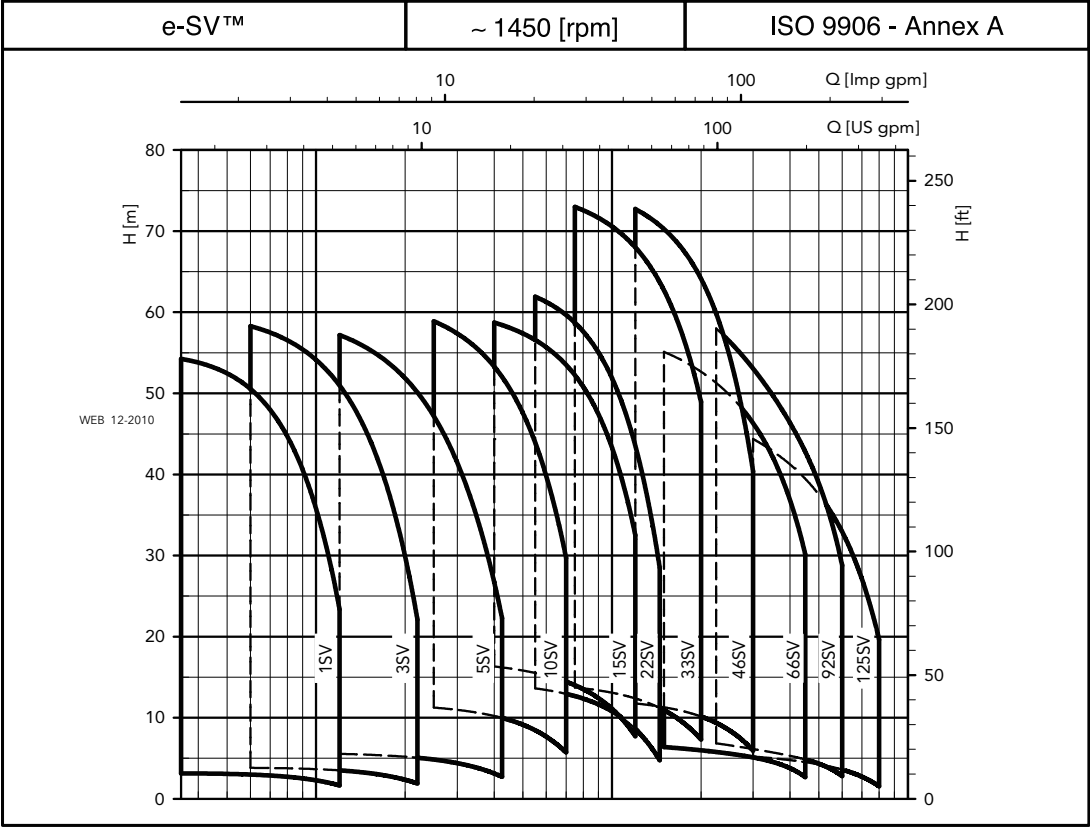
STAINLESS STEEL VERTICAL
MULTI-STAGE PUMPS

 **GOULDS**
WATER TECHNOLOGY
a xylem brand

**e-SV™ SERIES HYDRAULIC PERFORMANCE RANGE
AT 50 Hz, 2 POLES**



**e-SV™ SERIES HYDRAULIC PERFORMANCE RANGE
AT 50 Hz, 4 POLES**



Applications

Water supply and pressure boosting
Water treatment
Light industry
Irrigation & farming
Heating, ventilation and air-conditioning

*extra efficient
energy saving
easy to maintain*

Specifications

Delivery: up to 160 m³/h
Head: up to 330 m
Power supply: three-phase and single-phase 50 Hz
Maximum operating pressure: PN25-40 for sizes 1-22SV; PN16, PN25, PN40 for sizes 33-125
Temperature of pumped liquid: -30°C to +120°C standard version
Protection: IP55
Insulation class: F

- Liquid end made entirely of stainless steel in the 1, 3, 5, 10, 15, 22 m³/h standard version
- Standard motor
- Mechanical seal according to EN12756 (ex DIN24960) and ISO3069 for 1, 3, 5SV and 10, 15, 22SV (≤ 4 kW) series
- Balanced mechanical seal according to EN12756 (ex DIN24960) and ISO3069, which can be replaced without removing motor from the pump for 10, 15 and 22SV (≥ 5,5kW) series and 33, 46, 66, 92, and 125SV series
- Pumps for F, T, R, N versions in 1, 3, 5, 10, 15, 22SV and G & N versions in 33, 46, 66, 92, 125SV are **WRAS, ACS, and AS4020 certified for drinking water use**



OPTIONS AVAILABLE

1, 3, 5, 10, 15, 22SV VERSIONS

TYPE	2 POLES					
	1SV	3SV	5SV	10SV	15SV	22SV
AISI 304, PN25. In-line ports, round flanges	•	•	•	•	•	•
AISI 304, PN16. In-line ports, oval flanges	•	•	•	•	•	•
AISI 304, PN25. Discharge port above suction, round flanges	•	•	•	•	•	•
AISI 316, PN25. In-line ports, round flanges	•	•	•	•	•	•
AISI 316, PN25. Victaulic® couplings	•	•	•	•	•	•
AISI 316, PN40. Victaulic® couplings	•	•	•	•	•	•
AISI 316, PN25. Clamp couplings (DIN 32676)	•	•	•	•	•	•
AISI 316, PN25. Threaded couplings (DIN 11851)	•	•	•	•	•	•

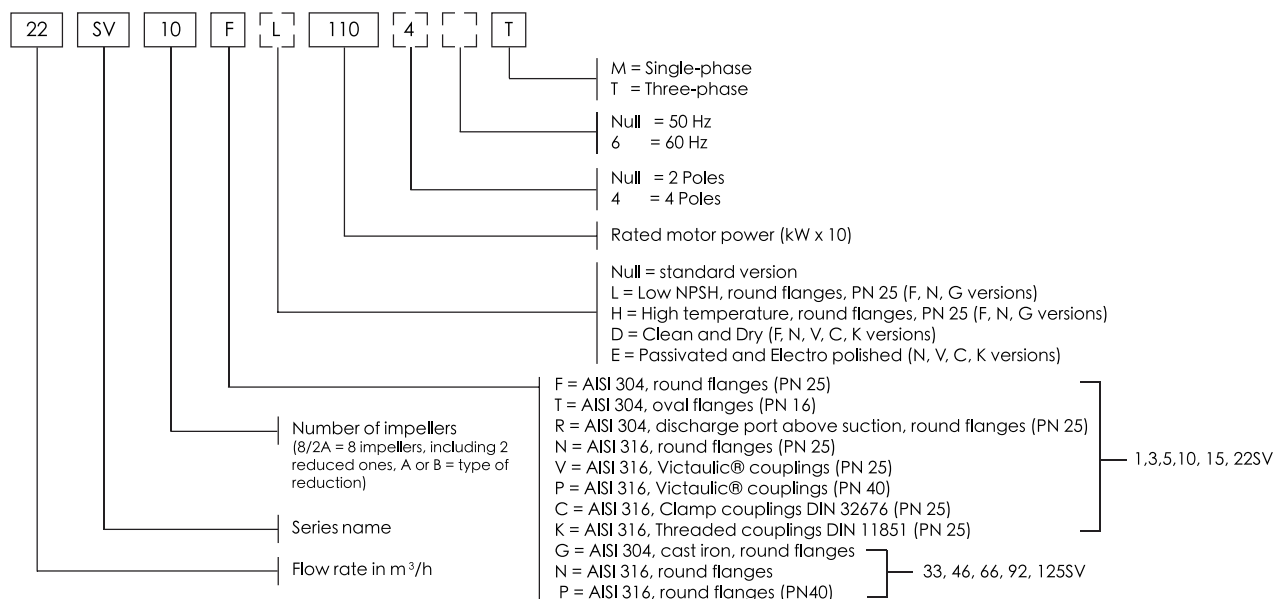
• = Available. For P versions see specific catalogue.

33, 46, 66, 92, 125SV VERSIONS

TYPE	2 POLES SV				
	33SV	46SV	66SV	92SV	125SV
CAST IRON PUMP CASING, LIQUID END MADE OF STAINLESS STEEL, IN-LINE ROUND FLANGES PN16, PN25 OR PN40 DEPENDING ON NUMBER OF STAGES AND MODEL.	•	•	•	•	
ALL AISI 316 STAINLESS STEEL, IN-LINE ROUND FLANGES, PN16, PN25 OR PN40 DEPENDING ON NUMBER OF STAGES AND MODEL.	•	•	•	•	
ALL AISI 316 STAINLESS STEEL. FLANGES, IN-LINE ROUND, PN40.	•	•	•	•	•

• = Available. For P versions see specific catalogue.

IDENTIFICATION CODE

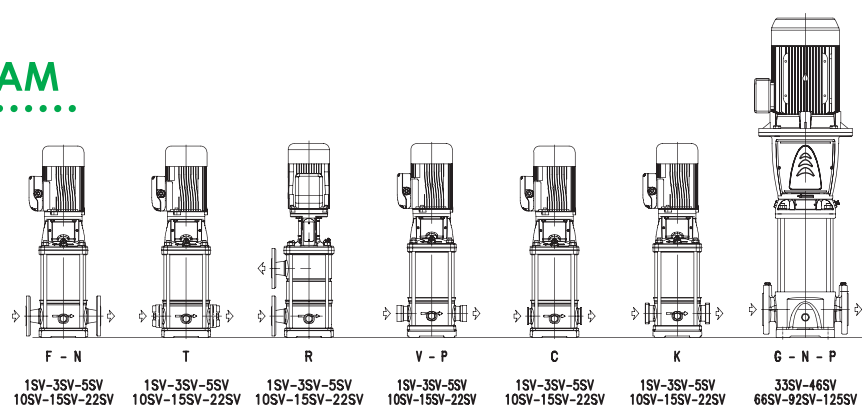


EXAMPLE: 22SV10F110T

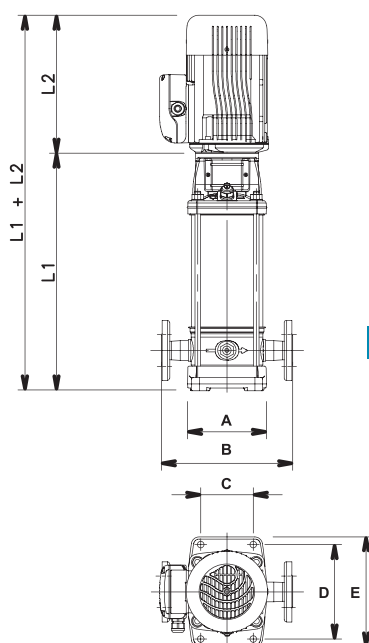
SV series electric pump, flow rate 22 m³/h, Number of impellers 10,

F version (AISI 304) round flanges, rated motor power 11 kW, 50 Hz frequency, three-phase.

VERSION DIAGRAM

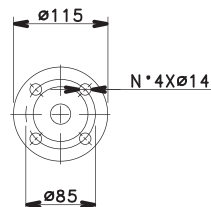


1SV to 22SV



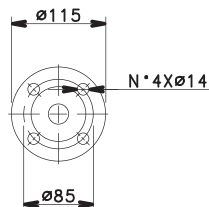
1SV F-N-R FLANGES

(DN25)



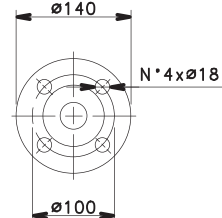
3SV F-N-R FLANGES

(DN25)



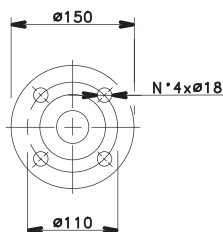
5SV F-N-R FLANGES

(DN32)



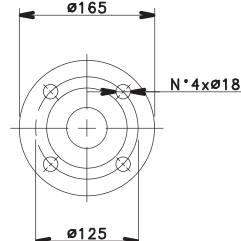
10SV F-N-R FLANGES

(DN40)



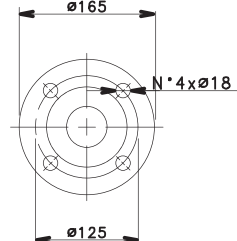
15SV F-N-R FLANGES

(DN50)

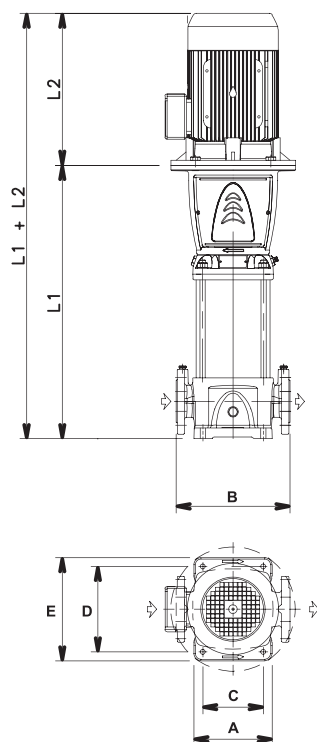


22SV F-N-R FLANGES

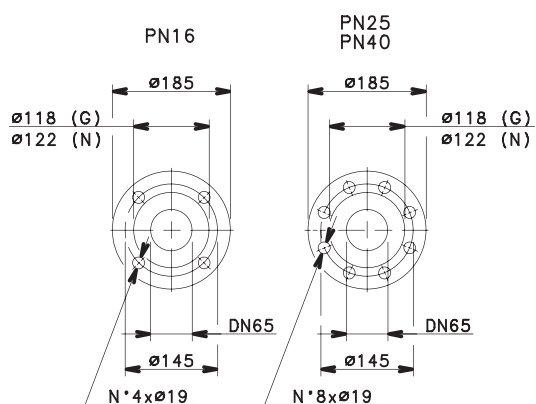
(DN50)



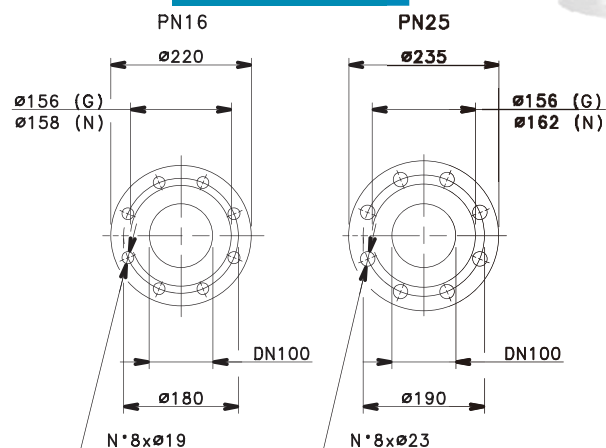
33SV to 125SV



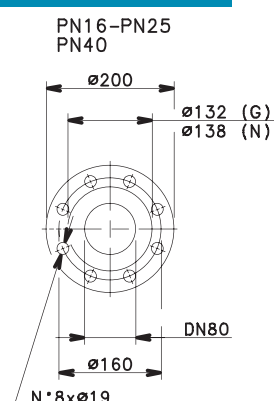
33SV G-N FLANGES



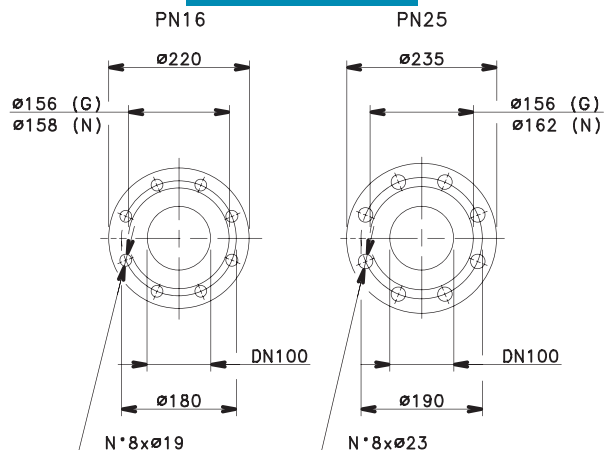
66SV G-N FLANGES



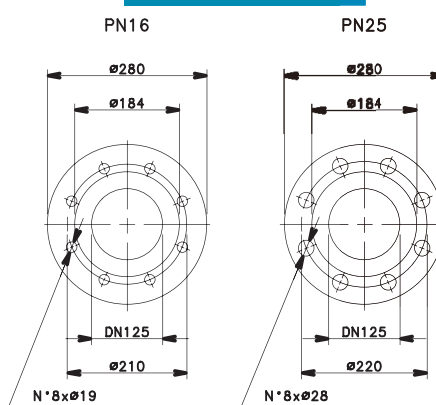
46SV G-N FLANGES



92SV G-N FLANGES



125SV G-N FLANGES



DIMENSIONS & WEIGHTS

PUMP TYPE	MOTOR				DIMENSIONS (mm)											WEIGHTS (kg)					
	2 POLES		4 POLES		2 POLES			4 POLES		L1	L2	A	B	C	D	E	PUMP	2 POLES		4 POLES	
	kW	SIZE	kW	SIZE	L1	L2 (1 PHASE)	L2 (3 PHASE)	L1	L2									PUMP	ELECTRIC PUMP	PUMP	ELECTRIC PUMP
15V02	0.37	71	0.25	71	278	209	209	278	231	150	250	100	180	210	8.3	13	8.3	15.2	-	-	
15V03	0.37	71	-	-	278	209	209	-	-	150	250	100	180	210	8.6	13.4	-	-	-	-	
15V04	0.37	71	-	-	298	209	209	-	-	150	250	100	180	210	9	13.8	-	-	-	-	
15V05	0.37	71	0.25	71	318	209	209	318	231	150	250	100	180	210	9.4	14.2	9.4	16.2	-	-	
15V06	0.37	71	-	-	338	209	209	-	-	150	250	100	180	210	9.8	14.6	-	-	-	-	
15V07	0.37	71	-	-	358	209	209	-	-	150	250	100	180	210	10.2	14.9	-	-	-	-	
15V08	0.55	71	0.25	71	378	231	231	378	231	150	250	100	180	210	10.5	15.2	10.6	17.4	-	-	
15V09	0.55	71	-	-	398	231	231	-	-	150	250	100	180	210	10.9	15.6	-	-	-	-	
15V10	0.55	71	-	-	418	231	231	-	-	150	250	100	180	210	11.3	16	-	-	-	-	
15V11	0.55	71	0.25	71	438	231	231	438	231	150	250	100	180	210	11.7	16.4	11.8	18.6	-	-	
15V12	0.75	80	-	-	468	226	263	-	-	150	250	100	180	210	12.7	23.7	-	-	-	-	
15V13	0.75	80	-	-	488	226	263	-	-	150	250	100	180	210	13.1	24.1	-	-	-	-	
15V15	0.75	80	0.25	71	528	226	263	518	231	150	250	100	180	210	13.9	25	13.4	20.2	-	-	
15V17	1.1	80	-	-	568	263	263	-	-	150	250	100	180	210	14.7	28	-	-	-	-	
15V19	1.1	80	0.25	71	608	263	263	598	231	150	250	100	180	210	15.5	28.8	14.9	21.7	-	-	
15V22	1.1	80	0.25	71	668	263	263	658	231	150	250	100	180	210	16.7	30	16.1	22.9	-	-	
15V25	1.5	90	-	-	738	263	298	-	-	150	250	100	180	210	18.7	35.3	-	-	-	-	
15V27	1.5	90	0.25	71	778	263	298	758	231	150	250	100	180	210	19.5	36.1	18.1	24.9	-	-	
15V30	2.2	90	0.25	71	838	263	298	818	231	150	250	100	180	210	20.7	37	19.3	26.1	-	-	
15V32	2.2	90	-	-	878	298	298	-	-	150	250	100	180	210	21.5	37.8	-	-	-	-	
15V34	2.2	90	0.25	71	918	298	298	898	231	150	250	100	180	210	22.3	38.6	20.9	27.7	-	-	
15V37	2.2	90	0.25	71	978	298	298	958	231	150	250	100	180	210	23.5	39.8	22.1	28.9	-	-	

PUMP TYPE	MOTOR				DIMENSIONS (mm)											WEIGHTS (kg)				
	2 POLES		4 POLES		2 POLES			4 POLES		L1	L2	A	B	C	D	E	2 POLES		4 POLES	
	kW	SIZE	kW	SIZE	L1	L2 (1 PHASE)	L2 (3 PHASE)	L1	L2								PUMP	ELECTRIC PUMP	PUMP	ELECTRIC PUMP
35V02	0.37	71	0.25	71	278	209	209	278	231	150	250	100	180	210	8	12.8	8	14.9		
35V03	0.37	71	-	-	278	209	209	-	-	150	250	100	180	210	8.4	13.2	-	-		
35V04	0.37	71	-	-	298	209	209	-	-	150	250	100	180	210	8.8	13.6	-	-		
35V05	0.55	71	0.25	71	318	231	231	318	231	150	250	100	180	210	9.2	14	9.3	16.8		
35V06	0.55	71	-	-	338	231	231	-	-	150	250	100	180	210	9.7	16.4	-	-		
35V07	0.75	80	-	-	358	226	263	-	-	150	250	100	180	210	10.9	16.8	-	-		
35V08	0.75	80	0.25	71	378	226	263	378	231	150	250	100	180	210	11.3	21.9	10.5	17.3		
35V09	1.1	80	-	-	408	263	263	-	-	150	250	100	180	210	11.7	24.4	-	-		
35V10	1.1	80	-	-	428	263	263	-	-	150	250	100	180	210	12.1	24.8	-	-		
35V11	1.1	80	0.25	71	448	263	263	438	231	150	250	100	180	210	12.5	25.2	11.6	18.4		
35V12	1.1	80	-	-	468	263	263	-	-	150	250	100	180	210	13.3	25.6	-	-		
35V13	1.5	90	-	-	498	263	298	-	-	150	250	100	180	210	14	30.6	-	-		
35V14	1.5	90	0.25	71	518	263	298	498	231	150	250	100	180	210	14.4	31	12.9	19.6		
35V16	1.5	90	-	-	558	263	298	-	-	150	250	100	180	210	15.2	31.8	-	-		
35V19	2.2	90	0.25	71	618	298	298	598	231	150	250	100	180	210	16.4	34.4	14.9	21.6		
35V21	2.2	90	-	-	658	298	298	-	-	150	250	100	180	210	17.2	35.2	-	-		
35V23	2.2	90	0.25	71	698	298	298	678	231	150	250	100	180	210	18	36	16.5	23.2		
35V25	2.2	90	-	-	738	298	298	-	-	150	250	100	180	210	18.9	36.8	-	-		
35V27	3	100	0.25	71	788	-	298	758	231	150	250	100	180	210	20.7	42.6	18	26		
35V29	3	100	-	-	828	-	298	-	-	150	250	100	180	210	21.5	43.4	-	-		
35V31	3	100	-	-	868	-	298	-	-	150	250	100	180	210	22.3	44.2	-	-		
35V33	3	100	0.25	71	908	-	298	878	231	150	250	100	180	210	23.1	45	20.4	28.4		

PUMP TYPE	MOTOR				DIMENSIONS (mm)											WEIGHTS (kg)				
	2 POLES		4 POLES		2 POLES			4 POLES		L1	L2	A	B	C	D	E	2 POLES		4 POLES	
	kW	SIZE	kW	SIZE	L1	L2 (1 PHASE)	L2 (3 PHASE)	L1	L2								PUMP	ELECTRIC PUMP	PUMP	ELECTRIC PUMP
55V02	0.37	71	-	-	268	209	209	-	-	150	250	100	180	210	8.4	13.2	-	-	-	-
55V03	0.55	71	0.25	71	293	231	231	293	231	150	250	100	180	210	8.9	15.7	8.9	15.7	-	-
55V04	0.55	71	-	-	318	231	231	-	-	150	250	100	180	210	9.4	16.1	-	-	-	-
55V05	0.75	80	-	-	353	226	263	-	-	150	250	100	180	210	10.5	21.5	-	-	-	-
55V06	1.1	80	0.25	71	378	263	263	368	231	150	250	100	180	210	11	23.6	10.4	17.2	-	-
55V07	1.1	80	-	-	403	263	263	-	-	150	250	100	180	210	11.5	24	-	-	-	-
55V08	1.1	80	-	-	428	263	263	-	-	150	250	100	180	210	12.1	24.5	-	-	-	-
55V09	1.5	90	0.25	71	463	263	298	443	231	150	250	100	180	210	12.7	30.9	11.8	18.6	-	-
55V10	1.5	90	-	-	488	263	298	-	-	150	250	100	180	210	13.1	31.3	-	-	-	-
55V11	1.5	90	-	-	513	263	298	-	-	150	250	100	180	210	13.6	31.8	-	-	-	-
55V12	2.2	90	0.25	71	538	298	298	518	231	150	250	100	180	210	14.1	32.3	13.2	20	-	-
55V13	2.2	90	-	-	563	298	298	-	-	150	250	100	180	210	14.6	32.8	-	-	-	-
55V14	2.2	90	-	-	588	298	298	-	-	150	250	100	180	210	15	33.2	-	-	-	-
55V15	2.2	90	0.37	71	613	298	298	593	231	150	250	100	180	210	15.5	33.7	14.6	22.6	-	-
55V16	2.2	90	-	-	638	298	298	-	-	150	250	100	180	210	16	34.2	-	-	-	-
55V18	3	100	0.37	71	698	-	298	668	231	150	250	100	180	210	18	39	16	24	-	-
55V21	3	100	0.37	71	773	-	298	743	231	150	250	100	180	210	19.4	40.4	17.5	25.5	-	-
55V23	4	112	-	-	823	-	319	-	-	150	250	100	180	210	20.4	47	-	-	-	-
55V25	4	112	0.55	80	873	-	319	853	263	150	250	100	180	210	21.3	48	20	26.7	-	-
55V26	4	112	0.55	80	948	-	319	928	263	150	250	100	180	210	23	49.4	21.4	28.1	-	-
55V30	5.5	132	-	-	1018	-	-	975	275	150	250	100	180	210	28.1	65.7	-	-	-	-
55V33	5.5	132	0.75	80	1093	-	375	1053	263	150	250	100	180	210	29.5	67.1	23.8	34.7	-	-

DIMENSIONS & WEIGHTS

PUMP TYPE	MOTOR				DIMENSIONS (mm)										WEIGHTS (kg)			
	2 POLES		4 POLES		2 POLES		4 POLES		2 POLES		4 POLES		2 POLES		4 POLES			
	kW	SIZE	kW	SIZE	L1	L2 (1 PHASE)	L2 (3 PHASE)	L1	L2	A	B	C	D	E	PUMP	ELECTRIC PUMP	PUMP	ELECTRIC PUMP
33SV1/1A	2.2	90	-	-	489	-	298	-	-	220	320	170	240	290	52	73	-	-
33SV1	3	100	-	-	489	-	298	-	-	220	320	170	240	290	52	73	-	-
33SV2/2A	4	112	-	-	564	-	319	-	-	220	320	170	240	290	56	82.5	-	-
33SV2/1A	4	112	-	-	564	-	319	-	-	220	320	170	240	290	56	82.5	-	-
33SV2	5.5	132	-	-	584	-	375	-	-	220	320	170	240	290	61	103	-	-
33SV3/2A	5.5	132	1.1	90	659	-	375	639	298	220	320	170	240	290	65	103	60	78
33SV3/1A	7.5	132	-	-	659	-	367	-	-	220	320	170	240	290	65	121	-	-
33SV3	7.5	132	-	-	659	-	367	-	-	220	320	170	240	290	65	121	-	-
33SV4/2A	7.5	132	-	-	734	-	367	-	-	220	320	170	240	290	69	125	-	-
33SV4/1A	11	160	1.1	90	769	-	428	714	298	220	320	170	240	290	73	143	64	82
33SV4	11	160	-	-	769	-	428	-	-	220	320	170	240	290	73	143	-	-
33SV5/2A	11	160	-	-	844	-	428	-	-	220	320	170	240	290	77	147	-	-
33SV5/1A	11	160	-	-	844	-	428	-	-	220	320	170	240	290	77	147	-	-
33SV5	15	160	1.5	90	844	-	494	789	298	220	320	170	240	290	77	179	68	91
33SV6/2A	15	160	-	-	919	-	494	-	-	220	320	170	240	290	81	183	-	-
33SV6/1A	15	160	-	-	919	-	494	-	-	220	320	170	240	290	81	183	-	-
33SV6	15	160	2.2	100	919	-	494	864	322	220	320	170	240	290	81	183	72	101
33SV7/2A	15	160	-	-	994	-	494	-	-	220	320	170	240	290	84	186	-	-
33SV7/1A	18.5	160	-	-	994	-	494	-	-	220	320	170	240	290	84	195	-	-
33SV7	18.5	160	2.2	100	994	-	494	939	322	220	320	170	240	290	84	195	75	104
33SV8/2A	18.5	160	-	-	1069	-	494	-	-	220	320	170	240	290	88	199	-	-
33SV8/1A	18.5	160	-	-	1069	-	494	-	-	220	320	170	240	290	88	199	-	-
33SV8	22	180	3	100	1069	-	494	1014	353	220	320	170	240	290	89	210	79	111
33SV9/2A	22	180	-	-	1144	-	494	-	-	220	320	170	240	290	93	214	-	-
33SV9/1A	22	180	-	-	1144	-	494	-	-	220	320	170	240	290	93	214	-	-
33SV9	22	180	3	100	1144	-	494	1089	353	220	320	170	240	290	93	214	83	115
33SV10/2A	22	180	-	-	1219	-	494	-	-	220	320	170	240	290	97	218	-	-
33SV10/1A	30	200	-	-	1219	-	657	-	-	220	320	170	240	290	104	319	-	-
33SV10	30	200	3	100	1219	-	657	1164	353	220	320	170	240	290	104	319	87	119
33SV11/2A	30	200	-	-	1294	-	657	-	-	220	320	170	240	290	118	333	-	-
33SV11/1A	30	200	-	-	1294	-	657	-	-	220	320	170	240	290	118	333	-	-
33SV11	30	200	4	112	1294	-	657	1239	398	220	320	170	240	290	118	333	96	150
33SV12/2A	30	200	-	-	1369	-	657	-	-	220	320	170	240	290	122	337	-	-
33SV12/1A	30	200	-	-	1369	-	657	-	-	220	320	170	240	290	122	337	-	-
33SV12	30	200	4	112	1369	-	657	1314	398	220	320	170	240	290	122	337	100	154
33SV13/2A	30	200	-	-	1444	-	657	-	-	220	320	170	240	290	127	342	-	-
33SV13/1A	30	200	-	-	1444	-	657	-	-	220	320	170	240	290	127	342	-	-
33SV13	-	-	4	112	-	-	-	1389	398	220	320	170	240	290	-	-	103	157

PUMP TYPE	MOTOR				DIMENSIONS (mm)										WEIGHTS (kg)								
	2 POLES		4 POLES		2 POLES		4 POLES		L1	L2 (1 PHASE)	L2 (3 PHASE)	L1	L2	A	B	C	D	E	PUMP	2 POLES		4 POLES	
	KW	SIZE	KW	SIZE	L1	L2 (1 PHASE)	L2 (3 PHASE)	L1												L2	PUMP	ELECTRIC PUMP	PUMP
46SV1/1A	3	100	-	-	529	-	298	-	-	240	365	190	265	315	58	79	-	-	-	-	-	-	
46SV1	4	112	-	-	529	-	319	-	-	240	365	190	265	315	58	84.5	-	-	-	-	-	-	
46SV2/2A	5.5	132	-	-	624	-	375	-	-	240	365	190	265	315	66	104	-	-	-	-	-	-	
46SV2	7.5	132	1.1	90	624	-	367	604	298	240	365	190	265	315	66	122	61	79	-	-	-	-	
46SV3/2A	11	160	-	-	734	-	428	-	-	240	365	190	265	315	74	144	-	-	-	-	-	-	
46SV3	11	160	1.5	90	734	-	428	679	298	240	365	190	265	315	74	144	65	88	-	-	-	-	
46SV4/2A	15	160	-	-	809	-	494	-	-	240	365	190	265	315	78	180	-	-	-	-	-	-	
46SV4	15	160	2.2	100	809	-	494	754	322	240	365	190	265	315	78	180	69	98	-	-	-	-	
46SV5/2A	18.5	160	-	-	884	-	494	-	-	240	365	190	265	315	82	193	-	-	-	-	-	-	
46SV5	18.5	160	2.2	100	884	-	494	829	322	240	365	190	265	315	82	193	73	102	-	-	-	-	
46SV6/2A	22	180	-	-	994	-	494	-	-	240	365	190	265	315	87	208	-	-	-	-	-	-	
46SV6	22	180	3	100	959	-	494	904	353	240	365	190	265	315	87	208	77	109	-	-	-	-	
46SV7/2A	30	200	-	-	1034	-	657	-	-	240	365	190	265	315	97	312	-	-	-	-	-	-	
46SV7	30	200	3	100	1034	-	657	979	353	240	365	190	265	315	97	312	80	112	-	-	-	-	
46SV8/2A	30	200	-	-	1109	-	657	-	-	240	365	190	265	315	101	316	-	-	-	-	-	-	
46SV8	30	200	4	112	1109	-	657	1054	398	240	365	190	265	315	101	316	84	138	-	-	-	-	
46SV9/2A	30	200	-	-	1184	-	657	-	-	240	365	190	265	315	105	320	-	-	-	-	-	-	
46SV9	37	200	4	112	1184	-	657	1129	398	240	365	190	265	315	105	335	88	142	-	-	-	-	
46SV10/2A	37	200	-	-	1259	-	657	-	-	240	365	190	265	315	114	344	-	-	-	-	-	-	
46SV10	37	200	5.5	132	1259	-	657	1224	405	240	365	190	265	315	114	344	97	156	-	-	-	-	
46SV11/2A	45	225	-	-	1334	-	746	-	-	240	365	190	265	315	126	482	-	-	-	-	-	-	
46SV11	45	225	5.5	132	1334	-	746	1299	405	240	365	190	265	315	126	482	105	164	-	-	-	-	
46SV12/2A	45	225	-	-	1409	-	746	-	-	240	365	190	265	315	131	487	-	-	-	-	-	-	
46SV12	45	225	5.5	132	1409	-	746	1374	405	240	365	190	265	315	131	487	109	168	-	-	-	-	
46SV13/2A	45	225	-	-	1484	-	746	-	-	240	365	190	265	315	135	491	-	-	-	-	-	-	

PUMP TYPE	MOTOR				DIMENSIONS (mm)														WEIGHTS (kg)			
	2 POLES		4 POLES		2 POLES		4 POLES		2 POLES		4 POLES		A	B	C	D	E	2 POLES		4 POLES		
	KW	SIZE	KW	SIZE	L1	L2 (1 PHASE)	L2 (3 PHASE)	L1	L2	L1	L2	A	B	C	D	E	PUMP	ELECTRIC PUMP	PUMP	ELECTRIC PUMP		
66SV1/1A	4	112	-	-	554	-	319	-	-	240	365	190	265	315	66	92.5	-	-	-	-		
66SV1	5.5	132	1.1	90	574	-	375	554	298	240	365	190	265	315	72	110	66	84	-	-		
66SV2/2A	7.5	132	-	-	664	-	367	-	-	240	365	190	265	315	77	133	-	-	-	-		
66SV2/3A	11	160	-	-	699	-	428	240	365	190	265	315	61	81	151	72	95	-	-	-		
66SV2	11	160	1.5	90	699	-	428	644	298	240	365	190	265	315	81	151	72	95	-	-		
66SV3/2A	15	160	-	-	789	-	494	-	-	240	365	190	265	315	86	188	-	-	-	-		
66SV3/1A	15	160	-	-	789	-	494	-	-	240	365	190	265	315	86	188	-	-	-	-		
66SV3	18.5	160	2.2	100	789	-	494	734	322	240	365	190	265	315	86	197	77	106	-	-		
66SV4/2A	18.5	160	-	-	879	-	494	-	-	240	365	190	265	315	92	203	-	-	-	-		
66SV4/1A	22	180	-	-	879	-	494	824	353	240	365	190	265	315	93	214	82	114	-	-		
66SV4	22	180	3	100	879	-	494	824	353	240	365	190	265	315	93	214	82	114	-	-		
66SV5/2A	30	200	-	-	969	-	657	-	-	240	365	190	265	315	105	320	-	-	-	-		
66SV5/1A	30	200	-	-	969	-	657	-	-	240	365	190	265	315	105	320	-	-	-	-		
66SV5	30	200	4	112	969	-	657	914	398	240	365	190	265	315	105	330	87	141	-	-		
66SV6/2A	30	200	-	-	1059	-	657	-	-	240	365	190	265	315	113	338	-	-	-	-		
66SV6/1A	30	200	-	-	1059	-	657	-	-	240	365	190	265	315	113	328	-	-	-	-		
66SV6	37	200	4	112	1059	-	657	1004	398	240	365	190	265	315	113	343	93	147	-	-		
66SV7/2A	37	200	-	-	1149	-	657	-	-	240	365	190	265	315	118	348	-	-	-	-		
66SV7/1A	37	200	-	-	1149	-	657	-	-	240	365	190	265	315	118	348	-	-	-	-		
66SV7	45	225	5.5	132	1149	-	746	1114	405	240	365	190	265	315	122	478	103	166	-	-		
66SV8/2A	45	225	-	-	1239	-	746	-	-	240	365	190	265	315	127	483	-	-	-	-		
66SV8/1A	45	225	-	-	1239	-	746	-	-	240	365	190	265	315	127	483	-	-	-	-		
66SV8	45	225	5.5	132	1239	-	746	1204	405	240	365	190	265	315	127	483	108	171	-	-		

e-SV series stainless steel vertical multi-stage pumps

Why "e"-SV? "e" stands for the ultimate in energy efficiency, easy installation and economical operation - a new generation of vertical, multi-stage pumps that deliver outstanding performance and reliability. Developed based on intensive research into user needs, the new e-SV pumps are designed to extend uptime and help reduce lifecycle costs in a wide variety of demanding applications.

Maximize e-SV's performance with the additions of

i-ALERT predictive condition monitoring & Hydrovar system controller

The i-ALERT is a compact, battery-operated device installed directly to the pump with easy to see and read LED lights. It provides early warning of improper operation so changes can be made before catastrophic failure occurs.

Hydrovar is a pump mounted variable speed, micro-processor based system controller, and was the world's first of its type to manage motor speed and hence match the pump's performance in water applications. It is fully programmable on site.



Korea
Xylem Water Solutions Korea Co., Ltd.
4F, Dong-A Building, 789
Yeoksam, Gangnam
Seoul, 135-929
Korea
Tel: +82.2.552.0553
Fax: +82.2.552.0557

Philippines
Xylem Water Systems International, Inc.
12 Ring Road
LISP II
Calamba Laguna 4027
Philippines
Tel: +63.49.545.6810
Fax: +63.49.545.6817

Malaysia
Xylem Water Systems International, Inc.
Lot 59, Jalan Tanjung Medan 26/12
40000 Shah Alam
Selanor Darul Ehsan
Malaysia
Tel: +603.5191.3789
Fax: +603.5191.2424

Singapore
Xylem Water Solutions Singapore Pte Ltd.
1 Jalan Kilang Timor
#06-06
Singapore 159303
Tel: +65.6681.0166
Fax: +65.6681.0168

Japan
Xylem Water Systems Japan Corporation
8-11-12 Higashi-Narashino
Narashino City, Chiba, 275-0001
Japan
Tel: +81.47.470.3451
Fax: +81.47.470.3453

Australia
Xylem Water Systems Australia Pty Ltd.
Unit 3/1 Federation Way
Chifley Business Park
Mentone Victoria 3194
Australia
Tel: +61.3.9551.7333
Fax: +61.3.9551.0321

Thailand
Xylem Water Systems International, Inc.
50/7 Moo 12 Bangna-Trad Road
KM.6 Bangkaew, Bangplee
Samutprakarn 10540
Thailand
Tel: +66.2740.2019
Fax: +66.2740.2019